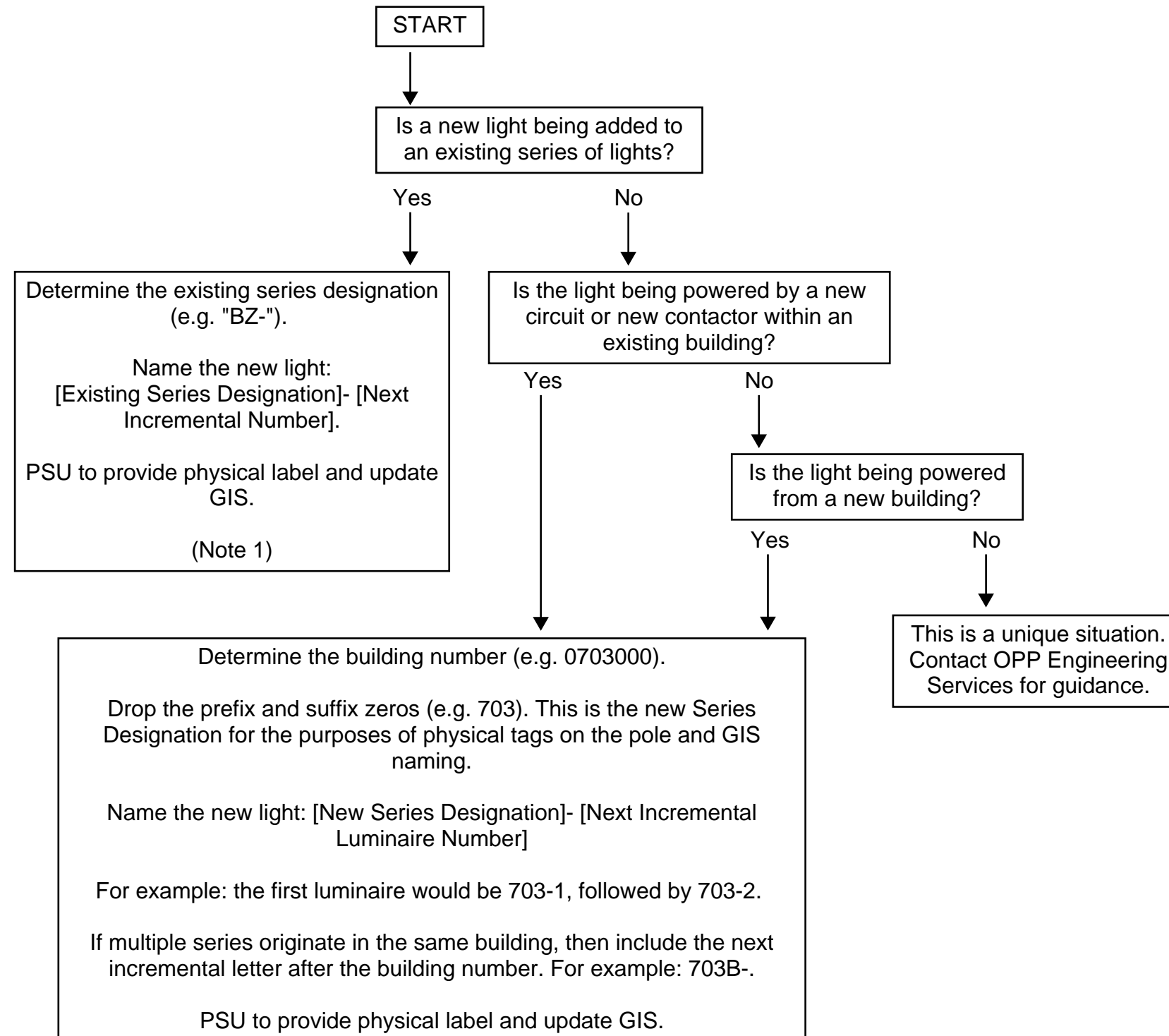


PSU Site Lighting Naming Convention



Key Notes:

Note 1: PSU often extends circuitry to add new lights to existing series, including a new light in-between existing or relocated lights. The rules in this box still apply, even if this results in a row of lights that appear out of order (e.g. BZ-15, BZ-16, BZ-29, BZ-17... with BZ-29 being the newly named light because elsewhere on site BZ-28 is the highest number existing).

General Notes:

- This naming convention applies to exterior pole-mounted lights (e.g. parking lots, streets, walkways).
- This same naming convention could also be applied for exterior building-mounted lights that, like pole lights, are CCS-controlled. In this case, PSU would provide a physical label but it is not necessary to update GIS because GIS does not record building-mounted lights.