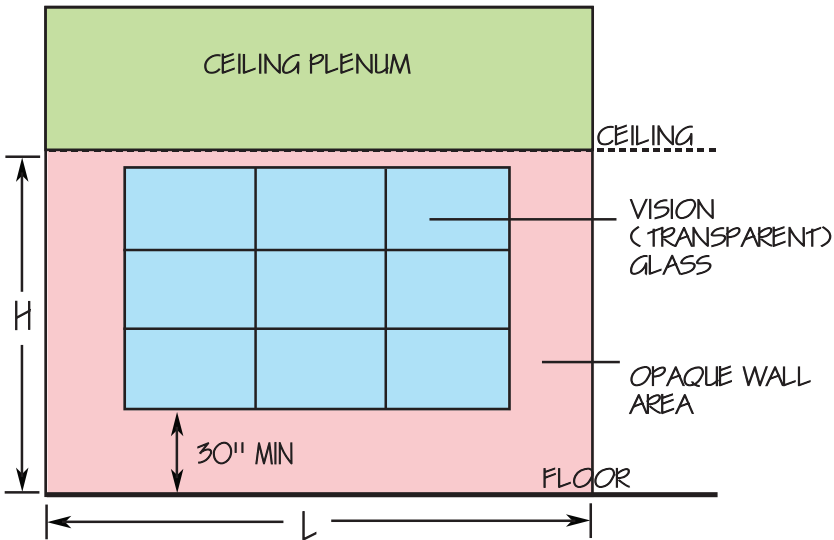


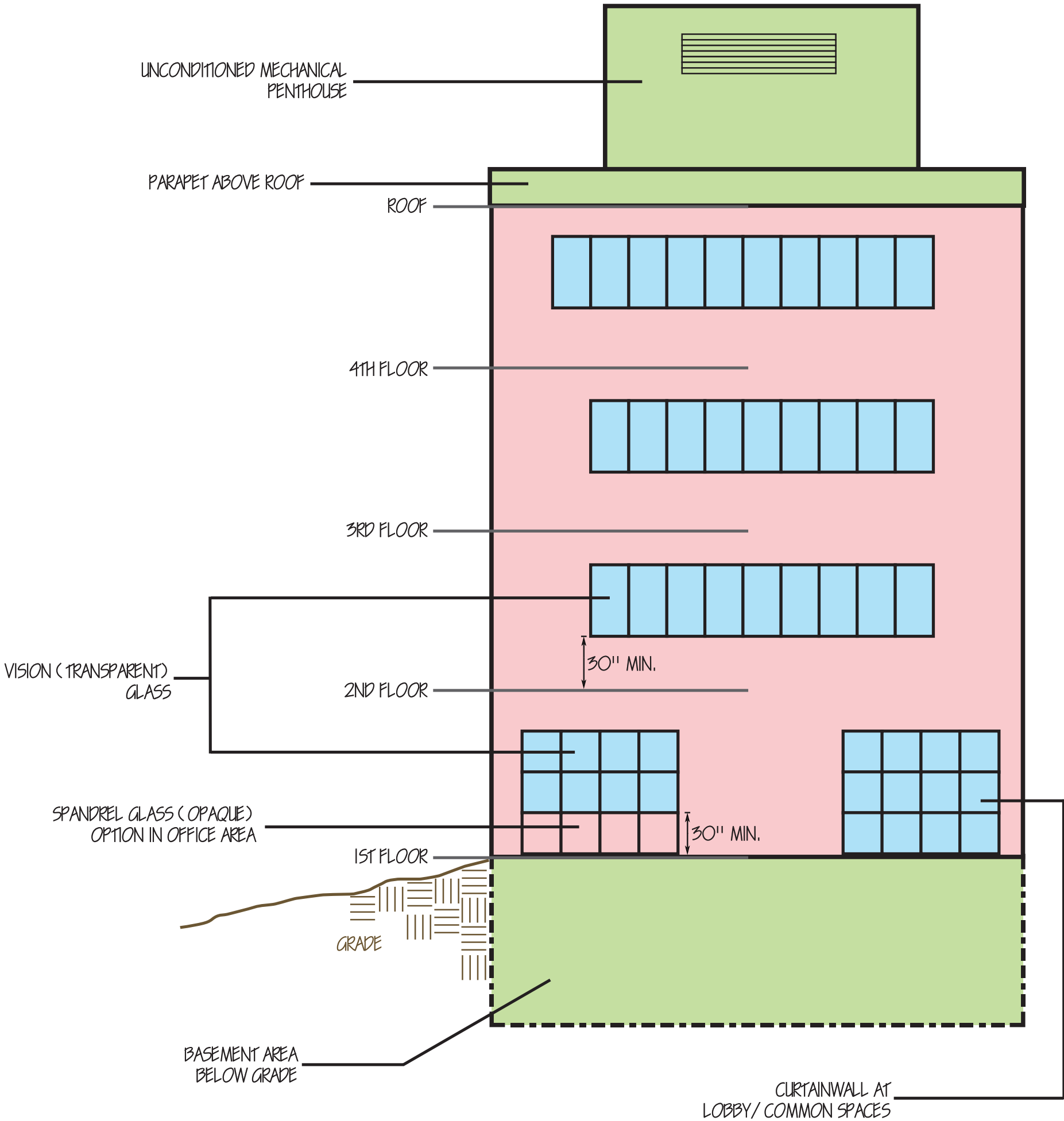
OVERALL TOTAL FENESTRATION
RATIO CALCULATION

RATIO OF
VISION GLASS
TO
GROSS WALL AREA = $\frac{\text{VISION GLASS AREA}}{\text{OPAQUE WALL AREA} + \text{VISION GLASS AREA}}$

 - EXCLUDED FROM CALCULATIONS



SAMPLE INTERIOR ELEVATION
(not to scale)



SAMPLE EXTERIOR ELEVATION
(not to scale)