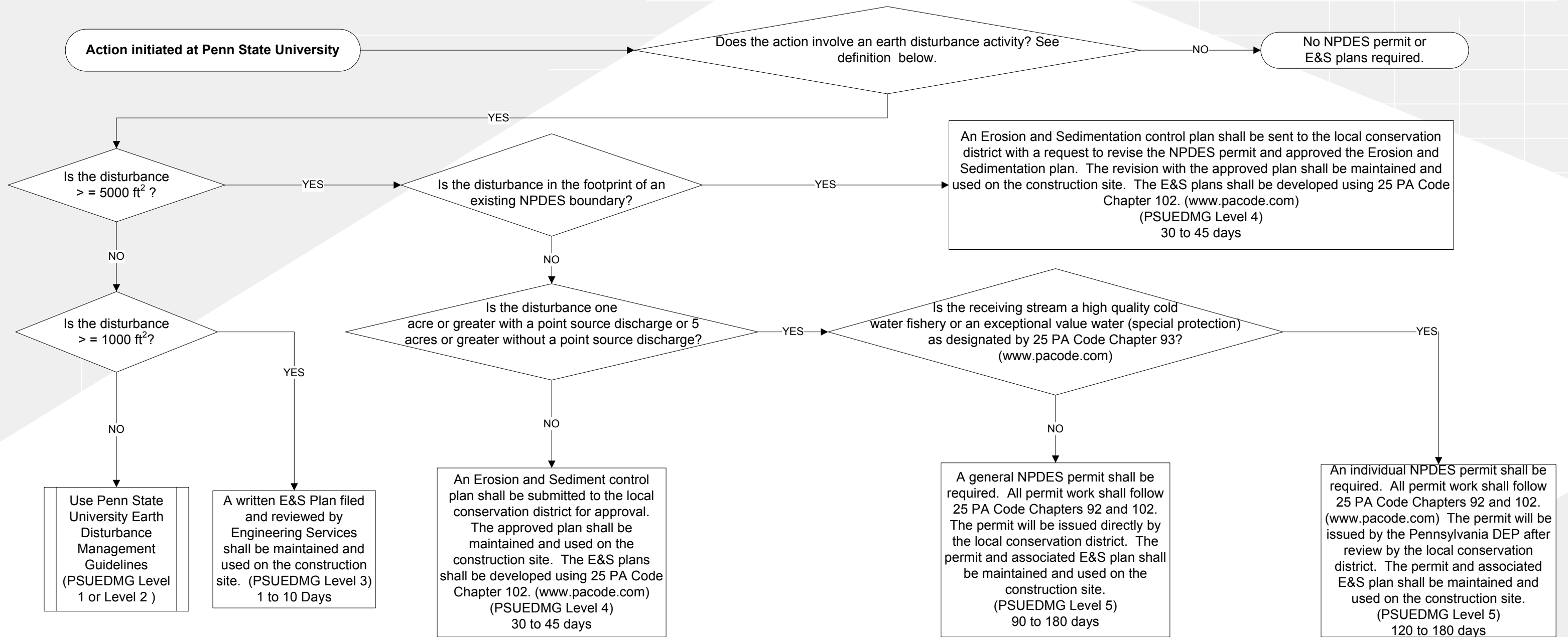


PSU Earth Disturbance Process

Monday, May 01, 2006



Definitions:

- o An **earth disturbance activity** is a construction or other human activity which disturbs the surface of the land, including, but not limited to, clearing and grubbing, grading, excavations, embankments, land development, agricultural plowing or tilling, timber harvesting activities, road maintenance activities, mineral extraction, and the moving, depositing, stockpiling, or storing of soil, rock or earth materials.
- o A **point source discharge** is any discernible, confined and discrete conveyance, including but not limited to, any pipe, ditch, channel, tunnel, conduit, well, discrete fissure, container, rolling stock, CAFO, landfill leachate collection system, vessel, or other floating craft from which pollutants are or may be discharged.
- o An **Erosion and Sediment Control Plan** is a site-specific plan identifying best management practices (BMPs) to minimize accelerated erosion and sedimentation. For agricultural plowing or tilling activities, the Erosion and Sediment Control Plan is that portion of a conservation plan identifying BMPs to minimize accelerated erosion and sedimentation.
- o A **NPDES permit** for stormwater discharges associated with construction activities is required for the discharge or potential discharge of stormwater into waters of the commonwealth for construction activities including clearing and grubbing, grading, and excavation activities. See detailed list of activities in earth disturbance activity definition above.
 - o A **General NPDES Permit** is an authorization for earthmoving activities in non-special protection watersheds which is processed and authorized by, in most cases, the County Conservation District. Authorization involves the review and approval of an E&S plan.
 - o An **Individual NPDES Permit** is an authorization for earthmoving activities in special protection watersheds where initial processing and review is completed by the county conservation district, but the final review, coordination, processing and authorization come from the Department of Environmental Protection.
- o The **Penn State University Earth Disturbance Guidelines (PSUEDMG)** is the methodology that will be used to manage all earth disturbances at the University.